



The Edisbury

4 Bedroom Detached / Link Detached Home

The Edisbury is a unique versatile family home, with the detached version featuring an undercover area leading to a detached garage. The link detached style also has the benefit of a garage. Its double fronted exterior is classic and well proportioned. The living room and kitchen/dining area both have French doors which provide direct access to the rear garden. The downstairs also features a separate dining room, study, cloakroom, and utility room. The first floor is exceptionally spacious with four generously sized bedrooms arranged around a turned staircase, with the principal bedroom having a walk-in dressing room and en-suite shower room. The second bedroom also has an en-suite shower room with the other two bedrooms sharing the family bathroom.



Room Sizes

1519 sqft

GROUND FLOOR

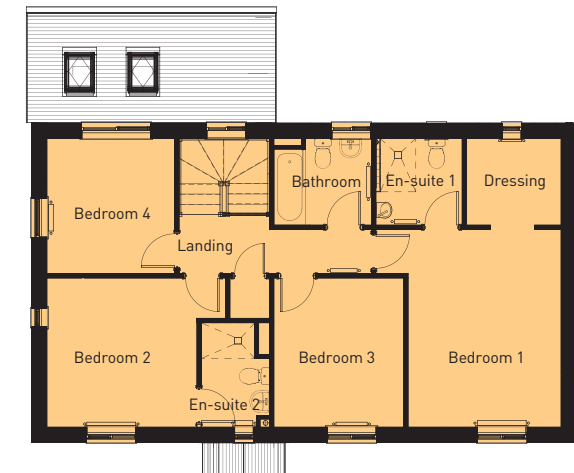
	<i>imperial</i>	<i>metric</i>
Living Room	14'10" x 11'	4.52m x 3.36m
Study	6' x 11'	1.83m x 3.36m
Kitchen Area	18'8" x 9'4"	5.70m x 2.85m
Utility	7' x 5'7"	2.15m x 1.70m
Dining Area	9'10" x 12'4"	3.00m x 3.76m
Hall	16'4" x 6'7"	5.00m x 2.01m
WC	5'8" x 2'10"	1.73m x 0.88m

FIRST FLOOR

	<i>imperial</i>	<i>metric</i>
Bedroom One	14'6" x 13'7"	4.42m x 4.15m
En-suite	6'4" x 6'3"	1.93m x 1.91m
Dressing	6'4" x 6'10"	1.93m x 2.10m
Bedroom Two	10'11" x 13'1"	3.33m x 4.00m
Ensuite	7'7" x 4'11"	2.33m x 1.50m
Bathroom	6'4" x 7'1"	1.93m x 2.17m
Bedroom Three	10'11" x 9'5"	3.33m x 2.89m
Bedroom Four	9'10" x 9'4"	3.02m x 2.85m



GROUND FLOOR



FIRST FLOOR