



The Hafod

2 Bedroom Detached Home

The Hafod 2-bedroom detached home is the ideal first home. The ground floor features a kitchen, living room with French doors to the garden, downstairs cloakroom and built-in storage. On the first floor there is a family bathroom and 2 double bedrooms. The second bedroom includes a built-in storage cupboard. Outside the property benefits from a private garden and parking.



Room Sizes

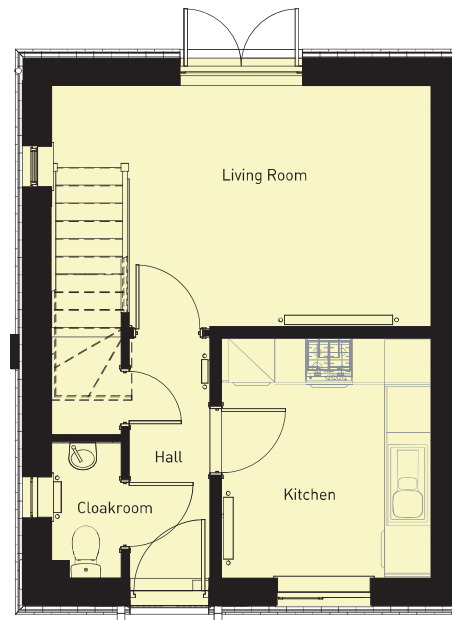
675 sqft

GROUND FLOOR

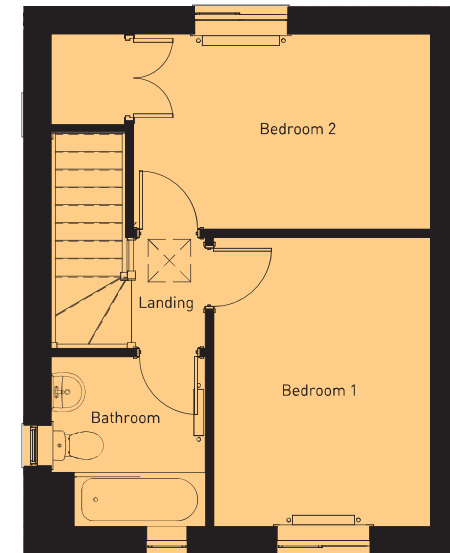
	<i>imperial</i>	<i>metric</i>
Living Room	10'2" x 16'	3.10m x 4.90m
Kitchen Area	10'2" x 8'10"	3.10m x 2.70m
Hall	10'2" x 3'1"	3.10m x 0.95m
WC	5'8" x 2'11"	1.74m x 0.90m

FIRST FLOOR

	<i>imperial</i>	<i>metric</i>
Bedroom One	12'2" x 9'2"	3.73m x 2.80m
Bedroom Two	8'2" x 12'6"	2.51m x 3.83m
Bathroom	7'2" x 6'6"	2.19m x 1.98m



GROUND FLOOR



FIRST FLOOR