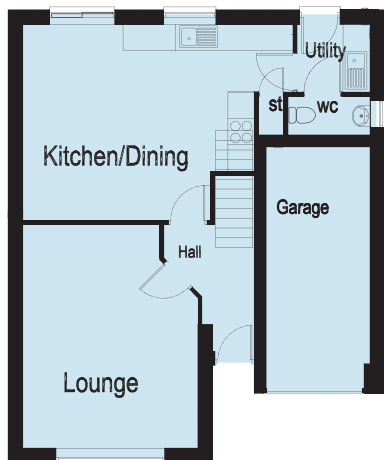


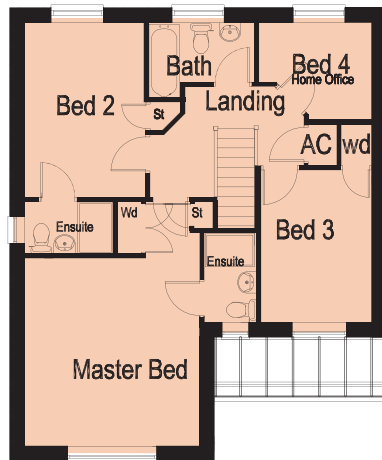


# The Richmond

A generous 4 bedroom detached home with integral garage and garden



Ground Floor



First Floor

Please Note: This is a computer generated image and subject to change. Room sizes are approximate, dimensions are taken from the longest room point (please consult with your sales executive or measurement points) kitchen and bathrooms are indicative. These plans are correct at time of publication but may be subject to change during construction.

Ground Floor	
Lounge	5.63m max x 4.01m 18' 5" max x 13' 2"
Kitchen/Dining	6.18m max x 4.49m 20' 3" max x 14' 8"
Utility	1.68m x 1.56m 5' 6" x 5' 2"
Cloaks	1.892 x 0.90m 6' 3" x 2' 10"
First Floor	
Master Bedroom	4.30m x 4.01m 14' 2" x 13' 2"
En-Suite	2.05m x 1.21m 6' 8" x 4' 0"
Bed 2	4.00m x 2.75m 13' 2" x 9' 1"
Ensuite	2.05m x 1.21m 6' 8" x 4' 0"
Bed 3	3.50m x 2.55m 11' 5" x 8' 4"
Bed 4	2.60m x 2.23m 8' 5" x 7' 4"
Bathroom	2.456m x 1.75m max 8' 1" x 5' 8" max

*Subtly exclusive*