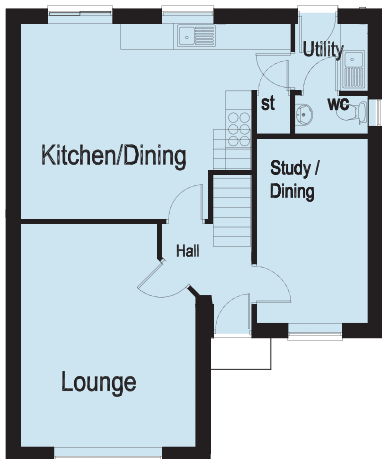


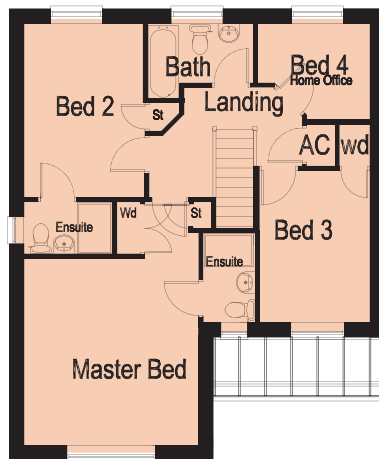


The Richmond II

A spacious 4 bedroom detached home with a detached single garage and garden



Ground Floor



First Floor

Ground Floor	
Lounge	5.63m max x 4.01m 18' 5 max x 13' 2
Study/Dining	4.24m x 2.55m 13' 10 x 8' 4
Utility	1.68m x 1.56m 5' 6 x 5' 2
Cloaks	1.68m x 0.90m 5' 6 x 1' 11
First Floor	
Master Bedroom	4.30m x 4.01m 14' 2 x 13' 2
En-Suite	2.05m x 1.21m 6' 8 x 4' 0
Bed 2	4.00m x 2.75m 13' 2 x 9' 1
Ensuite	2.05m x 1.21m 6' 8 x 4' 0
Bed 3	3.50m x 2.55m 11' 5 x 8' 4
Bed 4	2.60m x 2.23m 8' 5 x 7' 4
Bathroom	2.46m x 1.82m max 8' 1 x 5' 11 max

Please Note: This is a computer generated image and subject to change. Room sizes are approximate, dimensions are taken from the longest room point (please consult with your sales executive or measurement points) kitchen and bathrooms are indicative. These plans are correct at time of publication but maybe subject to change during construction.

Subtly exclusive