



The Yorke

5 Bedroom Semi Detached Home

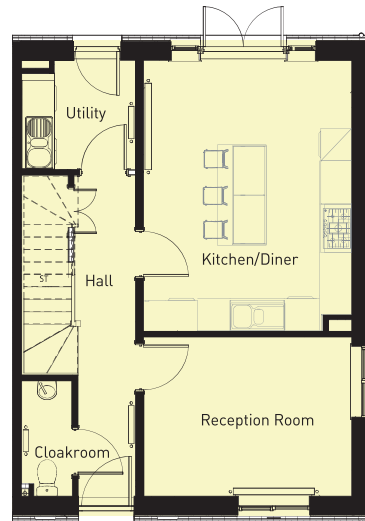
An impressive house design, the Yorke exudes stature. A long hallway leads to a stylish open-plan kitchen/diner with garden access via stunning French doors. At the front of the property there is a separate reception room. There is also a separate utility and cloakroom. On the first floor the family living room enjoys a light and airy space via a feature Juliet balcony. The principal bedroom includes en-suite facilities which also function as a family bathroom. Bedroom five completes this floor, which is also a perfect space for a home office. Located on the top floor is a second family bathroom and three further bedrooms with bedroom two having the benefit of an en-suite shower room. The property benefits from a garage, private driveway, and garden.



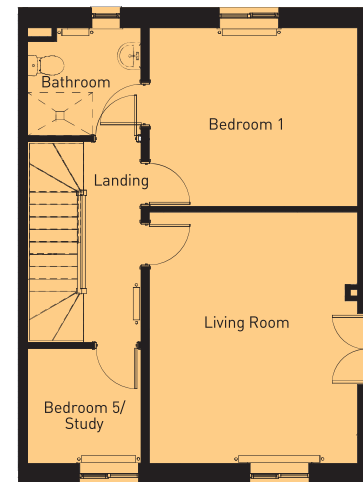
Room Sizes

1565 sqft

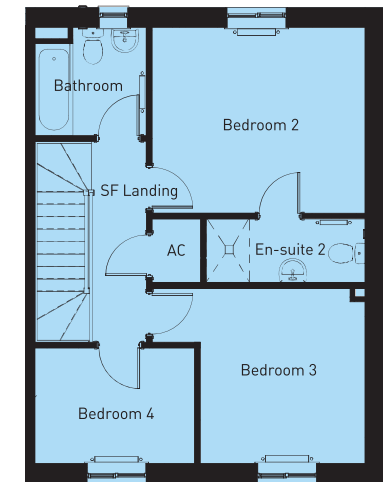
	<i>imperial</i>	<i>metric</i>
GROUND FLOOR		
Kitchen/Diner Area	16'4" x 12'7"	5.00m x 3.85m
Utility	6'7" x 6'10"	2.01m x 2.10m
Reception Room	9'7" x 12'7"	2.93m x 3.85m
Hall	19'5" x 3'1"	5.92m x 0.95m
WC	6'11" x 3'	2.12m x 0.92m
FIRST FLOOR		
Living Room	15'2" x 12'7"	4.64m x 3.85m
Bedroom One	10'9" x 12'7"	3.29m x 3.85m
Bathroom	6'2" x 6'10"	1.90m x 2.10m
Bedroom Five	6'11" x 6'10"	2.12m x 2.10m
SECOND FLOOR		
Bedroom Two	11'2" x 12'10"	3.42m x 3.93m
Ensuite	3'9" x 9'7"	1.15m x 2.92m
Bedroom Three	10'7" x 12'10"	3.23m x 3.93m
Bedroom Four	6'11" x 9'7"	2.12m x 2.94m
Bathroom	6'2" x 6'8"	1.90m x 2.05m



GROUND FLOOR



FIRST FLOOR



SECOND FLOOR